

**LARANZA™**  
GERMAN TECH

**KITCHEN & WARDROBE  
ACCESSORIES**



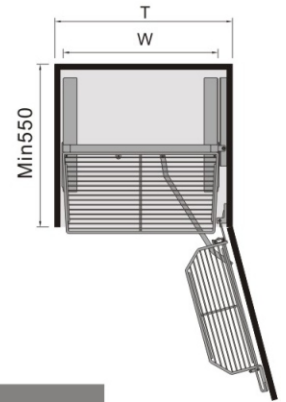
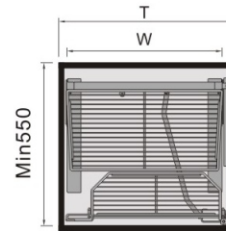
## About Company

LANZA is an organisation that is based on a strong foundation of hardwork & commitment. We look forward to take the organization to the apex of success & become one of the hardware solutions provider. The initiators of this company are people with profound knowledge in the hardware field & are well aware of the industry & its specifications Lanza has been reaping rich dividends on its investment in the challenging hardware industry.

Our mission is to accomplish our goals every time & establish a scene of trust in the minds of the people. As an organisation we understand that we have to attain customer satisfaction by providing them with exclusive service in every department. We possess a team which is sincere & proficient to attain the goals assigned & construct a positive stature of the organisation.

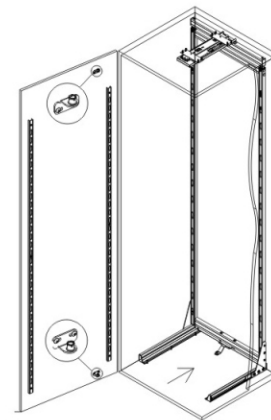
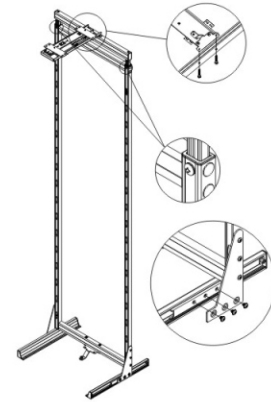
# STORAGE UNITS





### Wooden Pantry (Soft Close)

Item Code		Dimensions (W x D x H) mm	Finish	Cabinet Width
LWP454	4 Layer	405 x 500 x (1180-1400)	Diamond	450 mm
LWP456	6 Layer	405 x 500 x (1780-2100)	Diamond	450 mm
LWP604	4 Layer	555 x 500 x (1180-1400)	Diamond	600 mm
LWP606	6 Layer	555 x 500 x (1780-2100)	Diamond	600 mm



### Satin Pantry (Soft Close)

Item Code	Layer	Dimensions (W x D x H) mm	Style	Cabinet Width
LSSP454	4 Layer	365 x 500 x (1240-1450)	Stainless Steel	450 mm
LSSP456	6 Layer	365 x 500 x (1900-2150)	Stainless Steel	450 mm
LSSP604	4 Layer	515 x 500 x (1240-1450)	Stainless Steel	600 mm
LSSP606	6 Layer	515 x 500 x (1900-2150)	Stainless Steel	600 mm



**Silver Crystal**

### Glass Pantry (Soft Close)

Item Code		Dimensions (W x D x H) mm	Color	Cabinet Width
LGPPC8450	4 Layer	405 x 500 x (1180-1400)	Purple Crystal	450 mm
LGPPC12450	6 Layer	405 x 500 x (1780-2100)	Purple Crystal	450 mm
LGPPC8600	4 Layer	555 x 500 x (1180-1400)	Purple Crystal	600 mm
LGPPC12600	6 Layer	555 x 500 x (1780-2100)	Purple Crystal	600 mm
LGPSC450	6 Layer	405 x 500 x (1920-2100)	Silver Crystal	450 mm
LGPSC600	6 Layer	555 x 500 x (1920-2100)	Silver Crystal	600 mm



**Wooden Pantry**



**Glass Pantry**

### Sheet Pantry (Soft Close)

Item Code		Dimensions (W x D x H) mm	Color	Cabinet Width
LSPW450	6 Layer	365 x 500 x (1920-2220)	Black Wooden	450 mm
LSPW600	6 Layer	505 x 500 x (1920-2220)	Black Wooden	600 mm
LSPG450	6 Layer	365 x 500 x (1920-2220)	Black Glass	450 mm
LSPG600	6 Layer	505 x 500 x (1920-2220)	Black Glass	600 mm

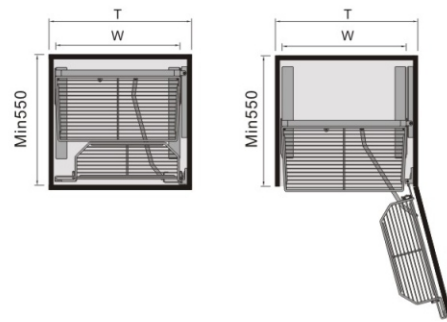




**Tall Unit Rotation & Without Rotation**

### Tall Unit (Soft Close)

Item Code		Dimensions (W x D x H) mm	Color	Cabinet Width
LTU300/300R	6 Layer	240 x 480 x (1780-2080)	Purple Crystal	300 mm
LTU400/400R	6 Layer	340 x 480 x (1780-2080)	Purple Crystal	400 mm
LTU200	6 Layer	150 x 480 x (1780-2080)	Purple Crystal	200 mm

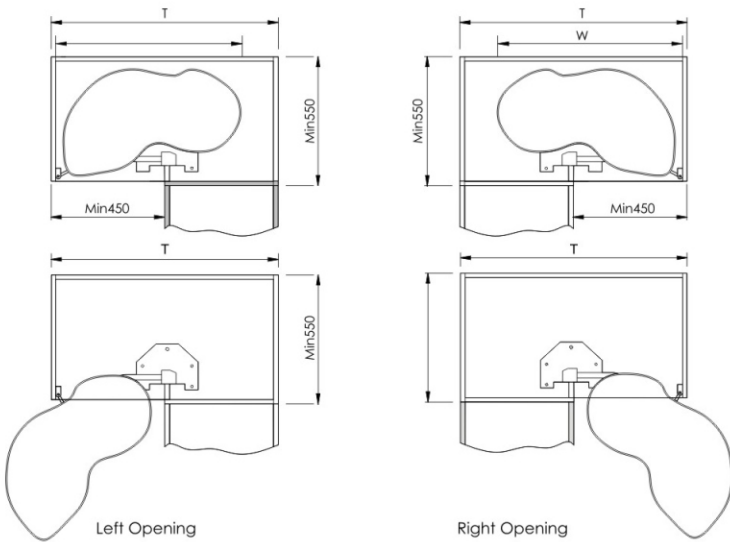


### Space Pantry

Item Code		Dimensions (W x D x H) mm	Color	Cabinet Width
LSP505	5 Layer	380 x 535 x (1720-2020)	Purple Crystal	500 mm
LSP605	5 Layer	480 x 535 x (1720-2020)	Purple Crystal	600 mm



Also Available

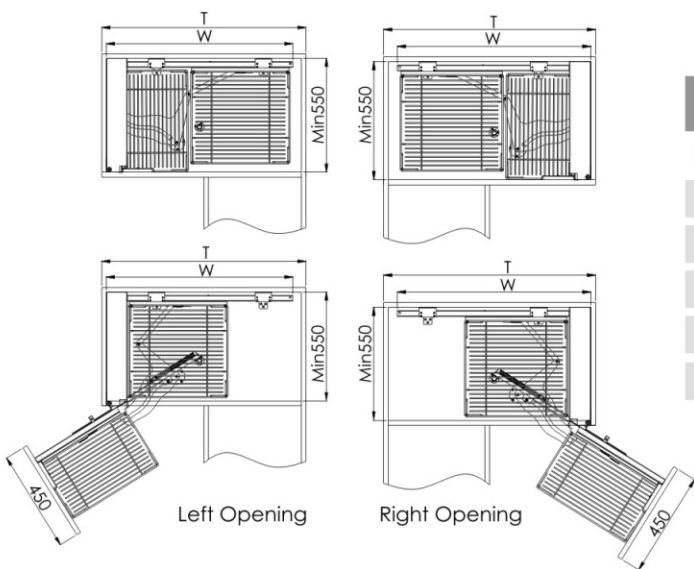
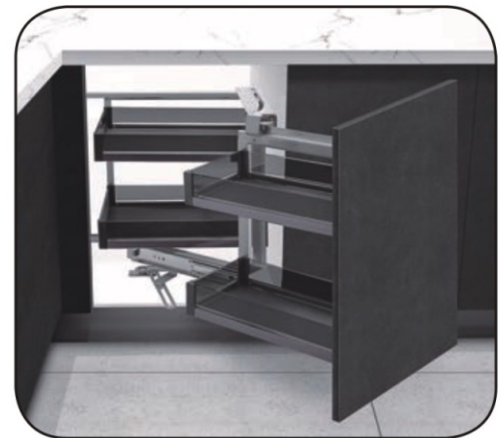


**Swing Magic Corner (Soft Closing)**

Item Code	Dimensions (W x D x H) mm	Cabinet Size
LSTWL	865 x 495 x (650-750)	900-1050
LSTWR	865 x 495 x (650-750)	900-1050
LSTASL	865 x 495 x (650-750)	900-1050
LSTASR	865 x 495 x (650-750)	900-1050



**Also Available**

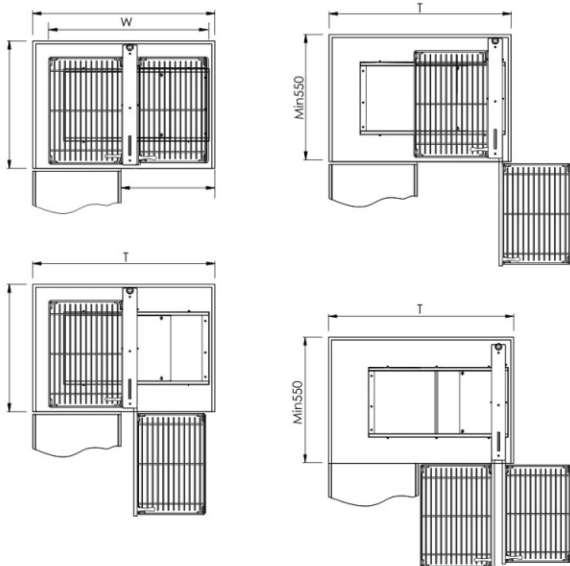


### Soft Close Magic Corner

Item Code	Dimensions (WxDxH)mm	Material	Cabinet Size
LSMCWL	(864-964) x 480 x 525	Wooden Diamond	900-1000
LSMCWR	(864-964) x 480 x 525	Wooden Diamond	900-1000
LSMCSC	(864-964) x 480 x 525	Silver Crystal	900-1000
LSMCPC	(864-964) x 480 x 525	Purple Crystal	900-1000
LSMCSS	(864-964) x 480 x 525	Stainless Steel	900-1000

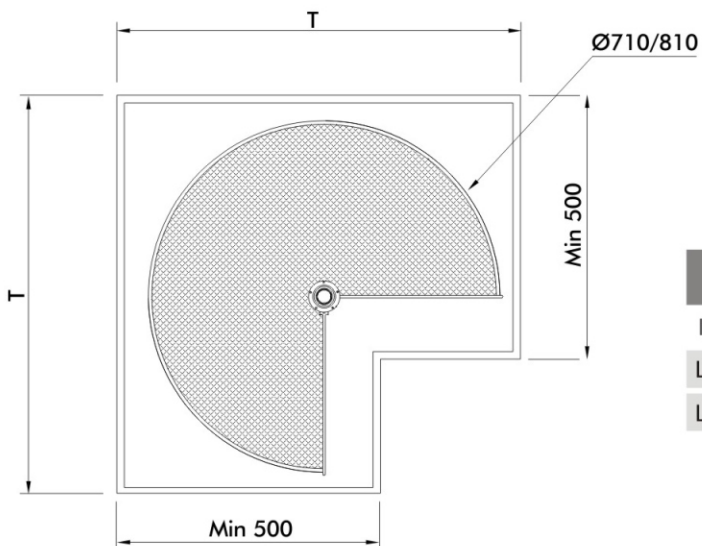


**Also Available**



### Universal Show Hand Corner

Item Code	Dimensions (WxDx H)mm	Material	Type
LUSHCWD	670 x 460 x 600	Wooden Diamond	Soft Close
LUSHCWA	670 x 460 x 600	Wooden Arena	Auto Locking
LUSHCSG	670 x 460 x 600	Sheet Glass	Soft Close
LUSHCSW	670 x 460 x 600	Sheet Wooden	Soft Close



### Wooden Carousel 270Deg

Item Code	Dimensions	Cabinet Size
LWC7270	Φ 710 x (560-790) mm	800 mm
LWC8270	Φ 800 x (560-790) mm	900 mm



### Corner Drawer

LCDWP	Depth 550 mm	White
LCDWG	Depth 550 mm	White
LCDWHG	Depth 550 mm	White



### D- Tray ABS - 180°

Item Code	Dimensions (W x D x H) mm
LABS180	Dia 710 x (600-820)

### Carousel ABS - 270°

LABS270	Dia 710 x (600 - 820)
---------	-----------------------



### Magic Drawer Soft Close

Item Code    Dimensions (W x D x H) mm

LPMB600    542 x 450 x 230

LPMB900    842 x 450 x 230



### Multi Functional Magic Drawer

Item Code    Dimensions (W x D x H) mm

LPMB900T    842 x 450 x 230





**Anodized Finish**



**SS Hairline Finish**

### Aluminum Rolling Shutters

Item No.	Finish	Dimensions (W x H) mm	Cabinet Width
LARS 450	Anodized	450 x 1320	450
LARS 600	Anodized & White	600 x 1320	600
LARS 600	SS Brush & Champagne	600 x 1320	600
LARS 900	Anodized & Champagne	900 x 1320	900



**Silver Finish**



**White Finish**

### PVC Rolling Shutters

Item No.	Finish	Dimensions (W x H) mm	Cabinet Width
LPRS 450	Silver	450 x 1320	450
LPRS 600	Silver & White	600 x 1320	600
LPRS 600	Black & Frosted Black	600 x 1320	600
LPRS 900	Silver	900 x 1320	900



### Glass Rolling Shutters

Item No.	Finish	Dimension (W x H) mm	Cabinet Width
LWGRS	White	600 x 1320	600
LBGRS	Black	600 x 1320	600
LMGRS	Mirror Grey	600 x 1320	600
LFGRS	Frosted	600 x 1320	600



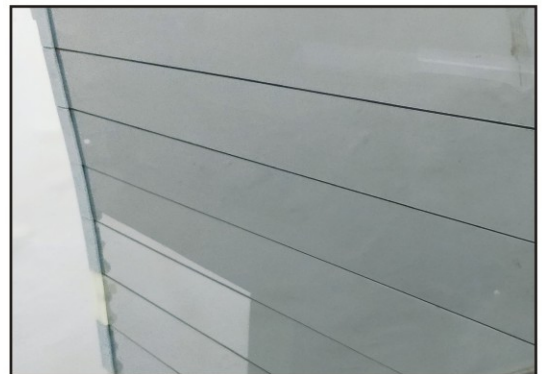
**Frosted Glass**



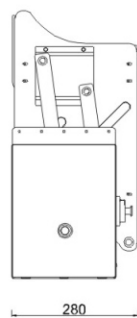
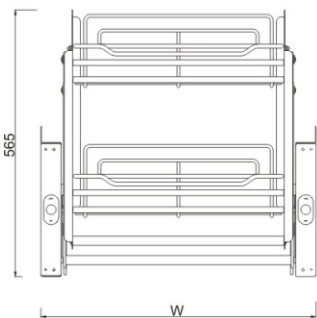
**Black Glass**



**White Glass**

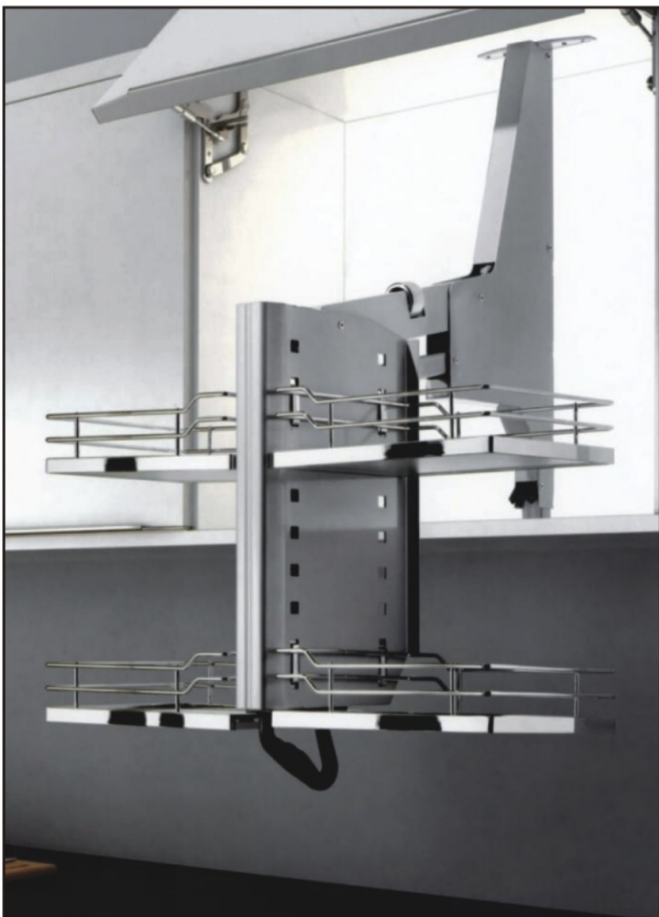


**Mirror Grey Glass**



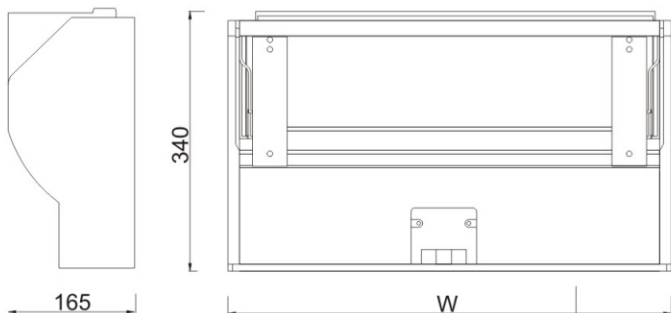
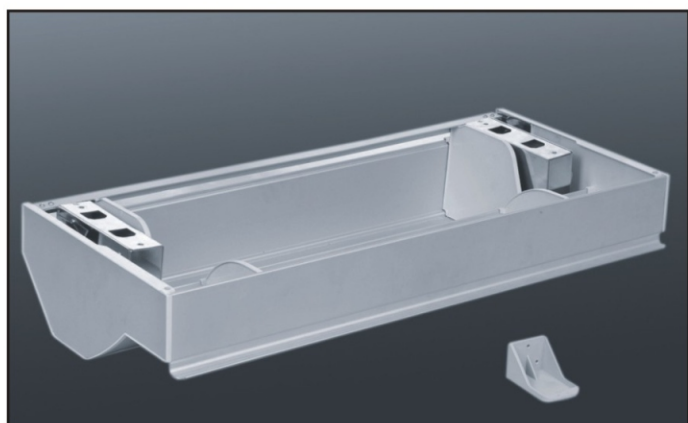
### Pull Down Unit

Item Code	Dimensions (W x D x H) mm	Cabinet Width
LPD 600	565 x 280 x 560	600
LPD 900	865 x 280 x 560	900
LPDS 600	565 x 280 x 560	600
LPDS 900	865 x 280 x 560	900



### Pull Down Unit

Item Code	Dimensions (W x D x H) mm	Cabinet Width
LPDG 600	565 x 280 x 560	600
LPDG 900	865 x 280 x 560	900
LPDW 600	565 x 280 x 585	600
LPDW 900	865 x 280 x 585	900
LEZPDW 900	865 x 280 x (700-800)	900



### Midway Storio

Item Code	Dimensions (W x D x H) mm	Cabinet Width
LMWS 600	560 x 340 x 145	600
LMWS 900	860 x 340 x 145	900



**Satin BPO (3 Layer)**

Item Code	Dimensions (W x D x H) mm	Cabinet Width
LBPO250	190 x 500 x 590	250 mm
LBPO300	240 x 500 x 590	300 mm
LBPO350	290 x 500 x 590	350 mm



**Satin BPO (2 Layer)**

Item Code	Dimensions (W x D x H) mm	Cabinet Width
LBPO150	104 x 500 x 490	150 mm
LBPO200	154 x 500 x 490	200 mm
LBPO250	204 x 500 x 490	250 mm



**Glass BPO (Bottom Mounting)**

Item Code	Dimensions (W x D x H) mm	Cabinet Width
LGBPO200	154 x 500 x 490	200 mm (2S)
LGBPO250	204 x 500 x 490	250 mm (2S)
LGBPO300	250 x 500 x 590	300 mm (3S)



**Glass BPO (Side Mounting)**

Item Code	Dimensions (W x D x H) mm	Cabinet Width
LGSBPO200	154 x 500 x 490	200 mm (2S)
LGSBPO250	204 x 500 x 490	250 mm (2S)
LGSBPO300	250 x 500 x 590	300 mm (2S)



**Bottom Mounting**



**Side Mounting**

### Wooden BPO (Diamond Style)

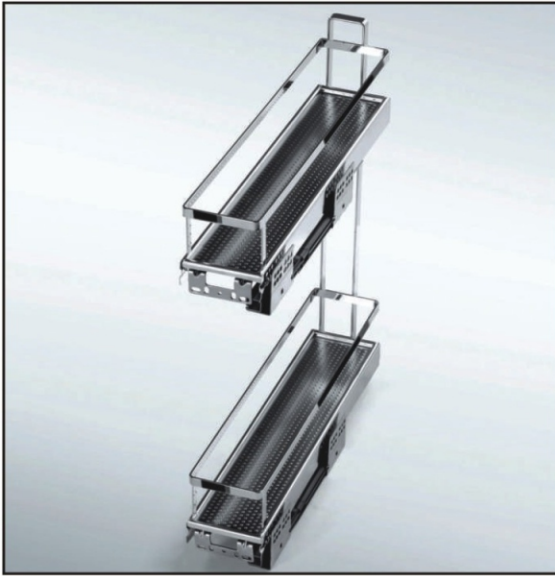
Item Code	Dimensions (W x D x H) mm	Cabinet Width
LDWPO150	102 x 480 x 490	150 mm
LDWBPO200	150 x 480 x 530	200 mm





### Wooden BPO (Diamond Style)

Item Code	Dimensions (W x D x H) mm	Cabinet Width
LDWPO 200	152 x 480 x 600	200 mm
LDWPO 300	252 x 480 x 600	300 mm
LDWPO 300(3S)	260 x 480 x 660	300 mm



### Powder Coated Side Pullout

Item Code	Dimensions (W x D x H) mm	Cabinet Width
LPO150	104 x 480 x 490	150 mm

### Detergent Pullout Soft Close

Item Code	Dimensions (W x D x H) mm
LDPSC	215 x 460 x 450

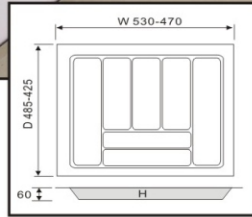


### Liquid Rack

Item Code	Dimensions (W x D x H) mm	Cabinet Width
LLR	280 x 450 x 360	350 mm

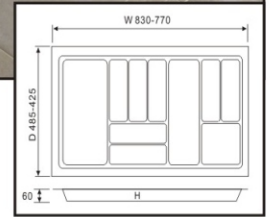
# DRAWER ORGANIZERS





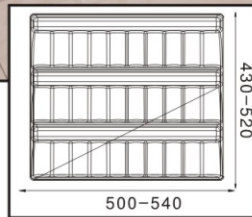
**ABS CUTLERY TRAY**

Item Code	Dimensions (W x D x H) mm	Colour
LCT450	385 x 485 x 60	Silver Grey
LCT500	430 x 485 x 60	Silver Grey
LCT600	530 x 485 x 60	Silver Grey



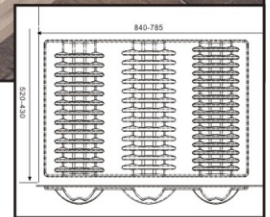
**ABS CUTLERY TRAY**

Item Code	Dimensions (W x D x H) mm	Colour
LCT700	630 x 485 x 60	Silver Grey
LCT800	730 x 485 x 60	Silver Grey
LCT900	830 x 485 x 60	Silver Grey



**ABS SPICE JAR TRAY**

Item Code	Dimensions (W x D x H) mm	Colour
LSJT600	540 x (470-520) x 60	Silver Grey
LSJT900	840 x (470-520) x 60	Silver Grey



**ABS PLATE TRAY**

Item Code	Dimensions (W x D x H) mm	Colour
LPT600	540 x (470-520) x 60	Silver Grey
LPT900	840 x (470-520) x 60	Silver Grey

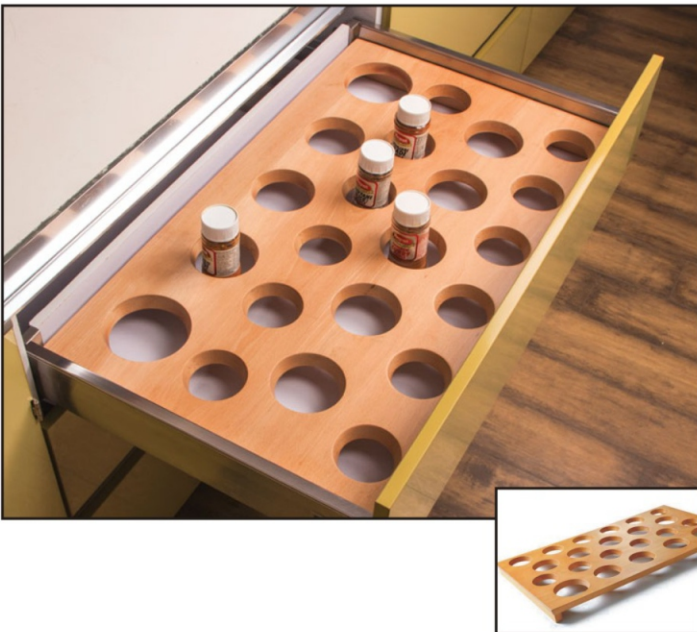


**WOODEN ADJUSTABLE CUTLERY**

Item Code	Cabinet Size	Colour
LWAC600	450 - 600 mm Adjustable	Steam Beach
LWAC900	600 - 900 mm Adjustable	Steam Beach

**WOODEN PLATE HOLDER**

Item Code	Cabinet Size	Colour
LWPH600	600 mm	Steam Beach
LWPH900	900 mm	Steam Beach



**WOODEN SPICE RACK**

Item Code	Cabinet Size	Colour
LWSR600	600 mm	Steam Beach
LWSR900	900 mm	Steam Beach

**WOODEN ROD SEPARATOR**

Item Code	Cabinet Size	Colour
LWRS600	600 mm	Steam Beach
LWRS900	900 mm	Steam Beach



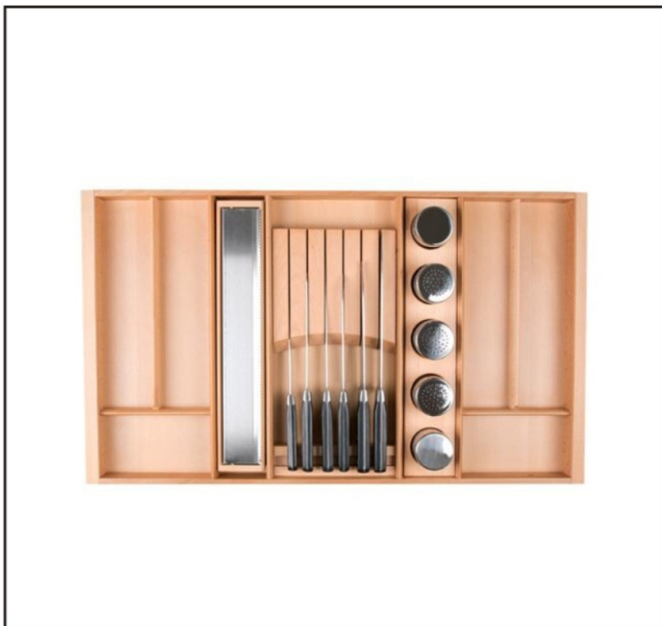
### Premium Wicker

Item Code	Dimensions (W x D x H) mm
LPWB600	562 x 500 x 227



### Wooden Cutlery

Item Code	Dimensions (W x D x H) mm
LAWC46	490 X 560 X 60



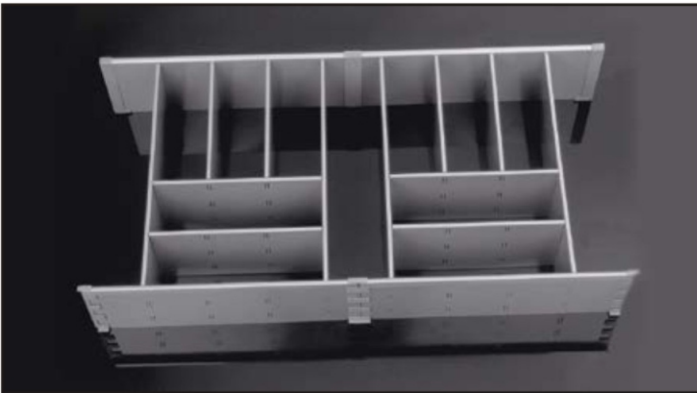
### Multi Purpose Wooden Cutlery

Item Code	Cabinet Size
LPFWC900	W 900 x D 500 mm



### Adjustable Wooden Cutlery

Item Code	Dimensions (W x D x H) mm
LAW600	(485 - 555) x 460 x 65
LAW900	(785 - 855) x 460 x 65



### METAL DIVIDER

Item Code	Cabinet Size (W x D)	Colour
LMD647	600 mm x 470 mm	Silver Grey
LMD650	600 mm x 500 mm	Silver Grey
LMD947	900 mm x 470 mm	Silver Grey
LMD950	900 mm x 500 mm	Silver Grey

### STAINLESS STEEL CUTLERY

Item Code	Cabinet Size	Material
LSSC450	450 mm	Stainless Steel
LSSC600	600 mm	Stainless Steel
LSSC800	800 mm	Stainless Steel
LSSC900	900 mm	Stainless Steel

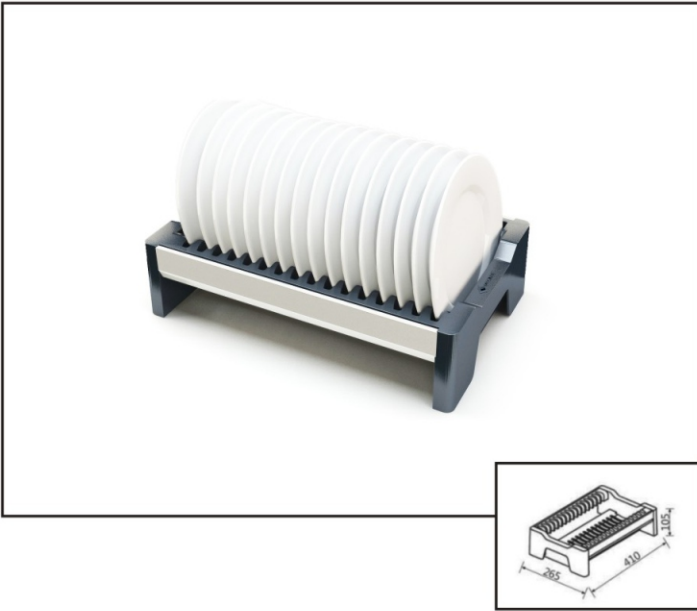


### DISH PLATE HOLDER

Item Code	Dimensions (Diameter x Height)	Material
LDPH	(180-320mm) x 170	ABS

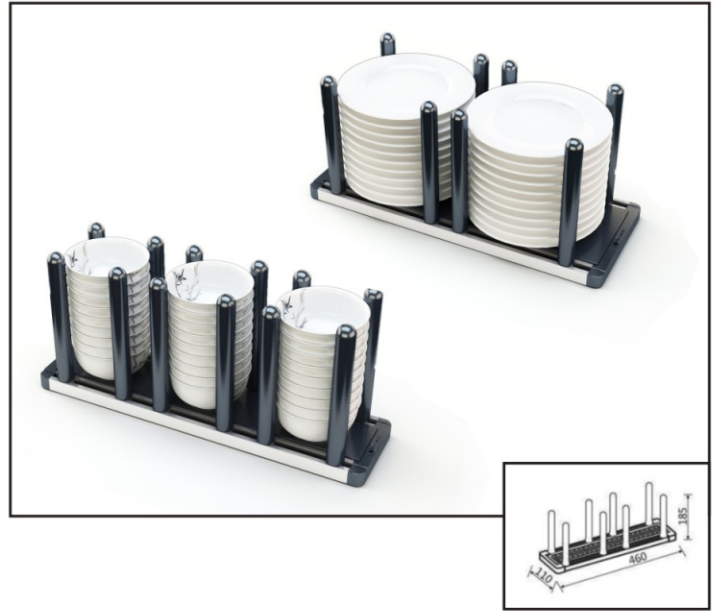
### WICKER BASKET

Item Code	Dimensions (W x D x H) mm	Finish
LWB450	414 x 500 x (100/150/200)	Natural Wood
LWB600	564 x 500 x (100/150/200)	Natural Wood



### PLATE RACK

Item Code	Dimensions (W x D x H) mm	Material
LPR	265 x 410 x 105	ABS



### BOWL & PLATE HOLDER

Item Code	Dimensions (W x D x H) mm	Material
LBH	110 x 460 x 185	ABS
LPH	165 x 460 x 185	ABS



### BOWLS RACK

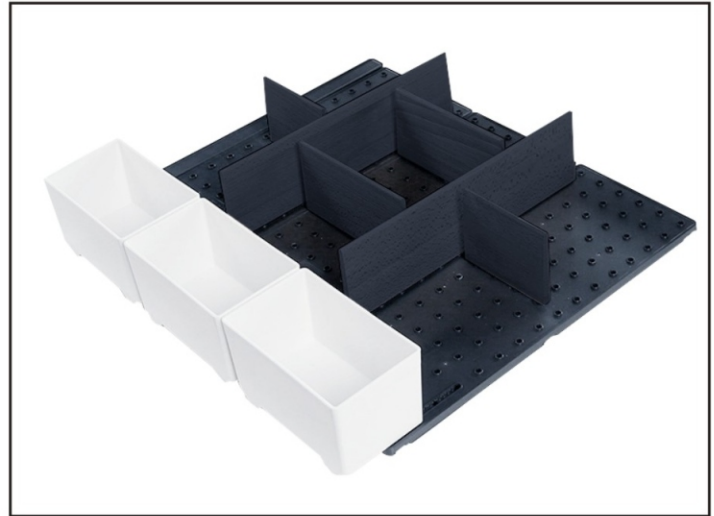
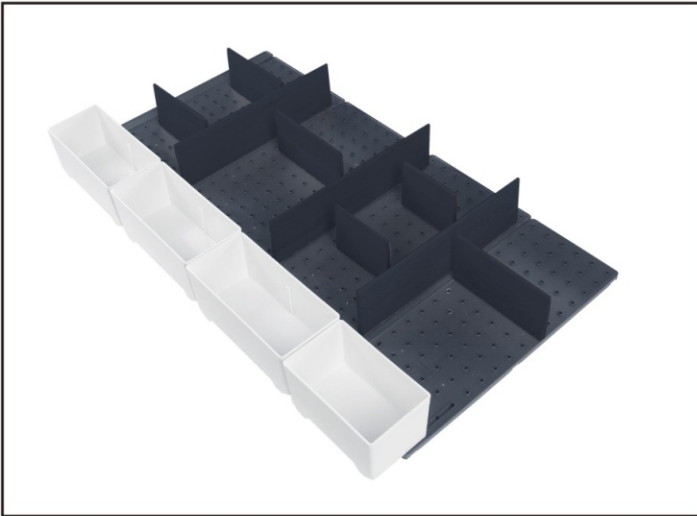
Item Code	Dimensions (W x D x H) mm	Material
LBR	87 x 460 x 56	ABS



### BOTTLE DIVIDER

Item Code	Dimensions (W x D x H) mm	Material
LBD	470 x (460-500) x 105	ABS



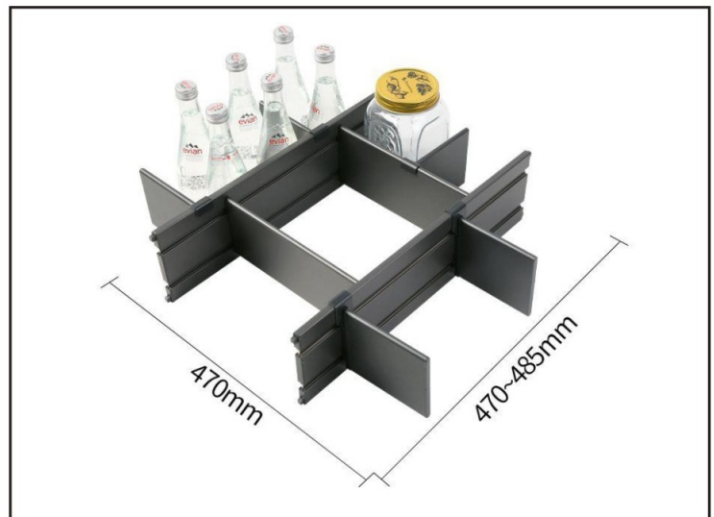
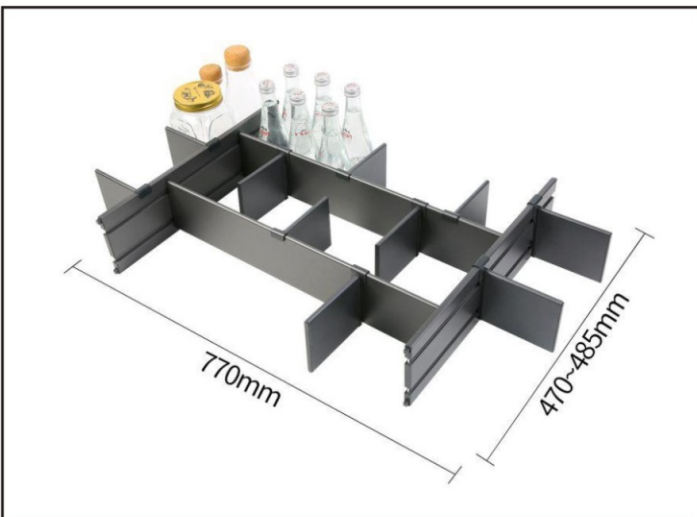


**ABS MULTI FUNCTIONAL DIVIDER**

Item Code	Dimension (WxDxH) mm	Cabinet Width
LMDH900B	775 x (410-480) x 91	900 mm

**ABS MULTI FUNCTIONAL DIVIDER**

Item Code	Dimension (WxDxH) mm	Cabinet Width
LMDH600B	475 x (410-480) x 91	600 mm

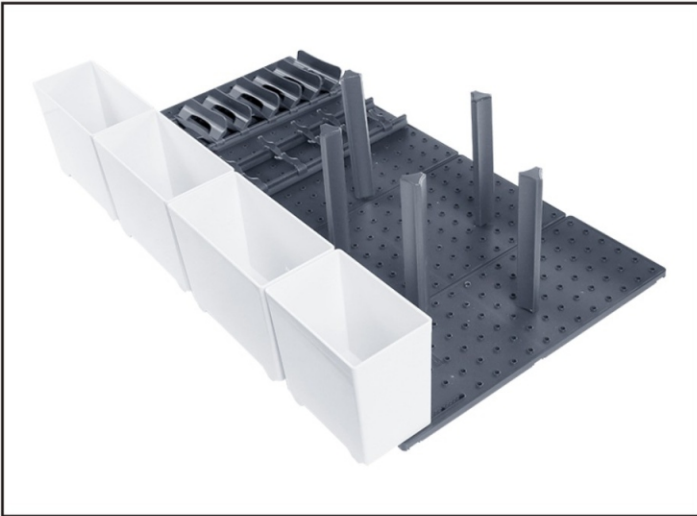


**ABS MULTI FUNCTIONAL INSERT**

Item Code	Dimension (WxDxH) mm	Cabinet Width
LMDH900D	770 x (470-485) x 91	900 mm

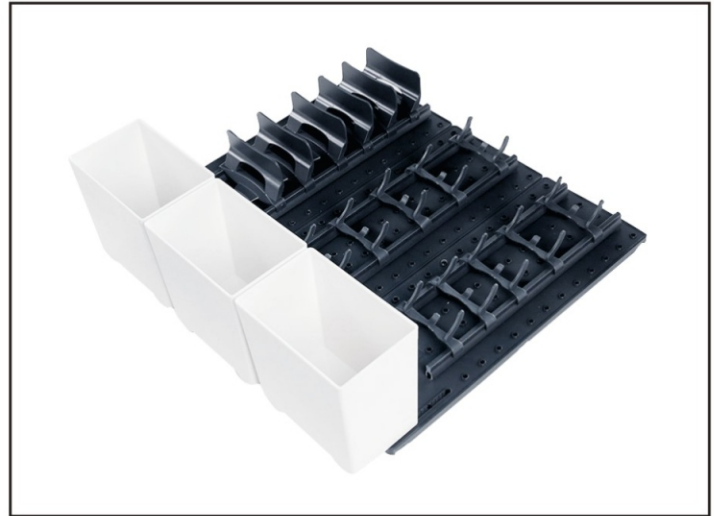
**ABS MULTI FUNCTIONAL INSERT**

Item Code	Dimension (WxDxH) mm	Cabinet Width
LMDH600D	470 x (470-485) x 91	600 mm



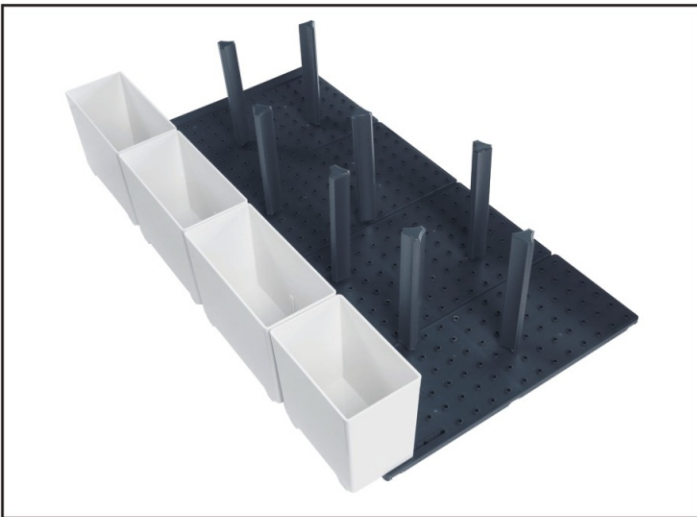
**ABS MULTI FUNCTIONAL INSERT**

Item Code	Dimension (WxDxH) mm	Cabinet Width
LMDH900A	775 x (410-480) x 190	900 mm



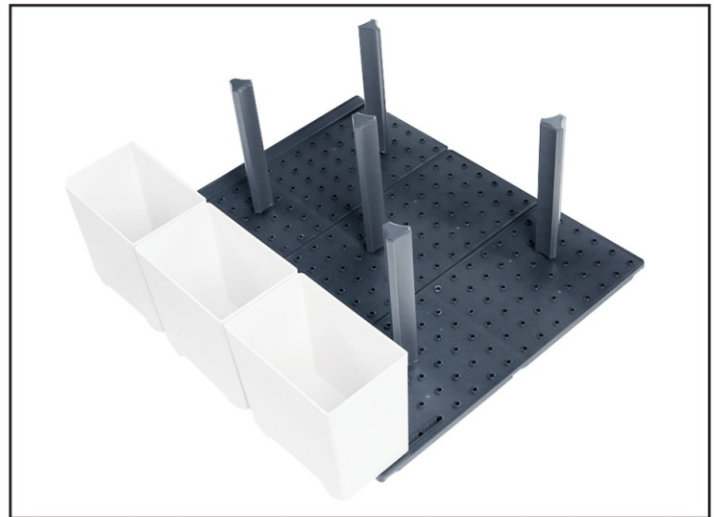
**ABS MULTI FUNCTIONAL INSERT**

Item Code	Dimension (WxDxH) mm	Cabinet Width
LMDH600A	475 x (410-480) x 150	600 mm



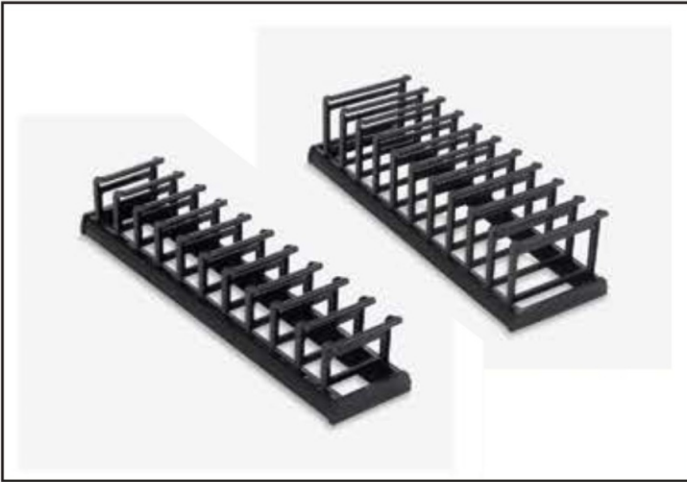
**ABS MULTI FUNCTIONAL ROD SEP.**

Item Code	Dimension (WxDxH) mm	Cabinet Width
LMDH900C	775 x (410-480) x 190	900 mm



**ABS MULTI FUNCTIONAL ROD SEP.**

Item Code	Dimension (WxDxH) mm	Cabinet Width
LMDH600C	475 x (410-480) x 190	600 mm



### ABS Cup & Plate Fitment

Item Code	Depth
LACF	475 mm
LACF	475 mm



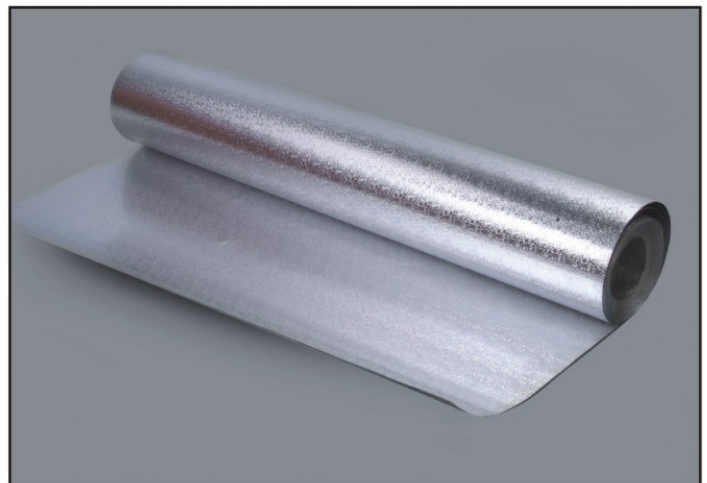
### Premium Plate Rack

Item Code	Depth
LPPR	470 mm



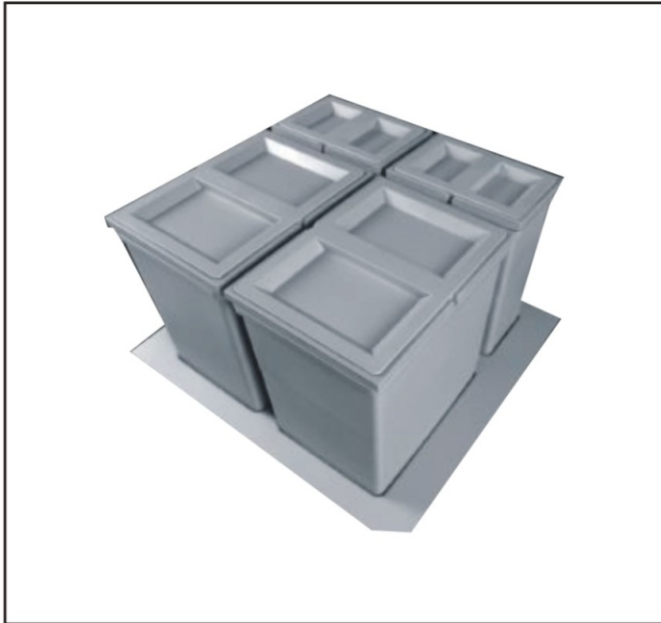
### Anti Slip Matt

Item Code	Dimensions
LASM Grey	500 mm x 20 Mtrs.
LASM 550 Grey	550 mm x 20 Mtrs.
LASM White	500 mm x 20 Mtrs.
LASM Darg Grey	500 mm x 20 Mtrs.



### Under Sink Foil

Item Code	Dimensions
LUSF	1200 mm x 48 Mtrs



### Air Tight Grain Storage Unit

Item Code	Dimensions (W x D x H) mm
LSU600	530 X 485 X 275



### Wooden Chopping Board

Item Code	Dimensions (W x D x H) mm
LCB300	300 X 400 X 25



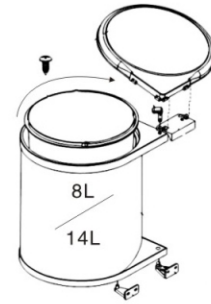
### Knife Rack

Item Code	Description
LKR	3 Piece Knife Set with Holder
LFC	Foil Cutter



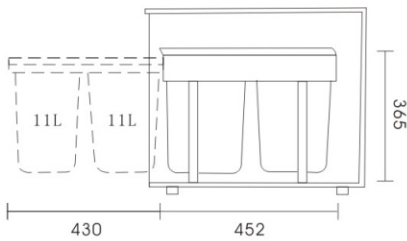
### Knife Holder

Item Code	Dimensions (W x D x H) mm
LKH	180 x 170 x 340



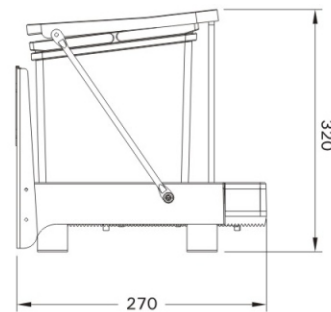
### AUTO LID WASTE BIN

Item Code	Dimension (WxDxH) mm	Capacity
LAWB8	300 x 300 x 280	8 Litre
LAWB14	320 x 360 x 360	14 Litre



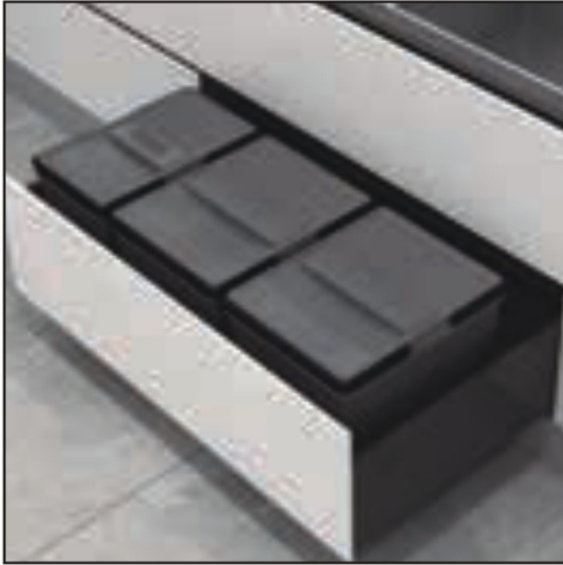
### SLIDING WASTE BIN

Item Code	Dimension (WxDxH) mm	Capacity
LSWB	250 x 452 x 365	11Ltr. + 11Ltr.



### SWING OUT CABINET WASTE BIN

Item Code	Dimension (WxDxH) mm	Capacity
LSCWB	370 x 270 x 320	7 Ltr. + 7 Ltr.



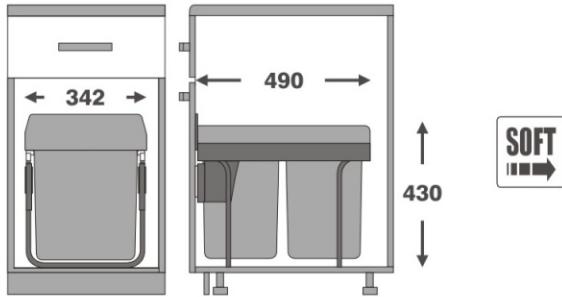
31L



49L

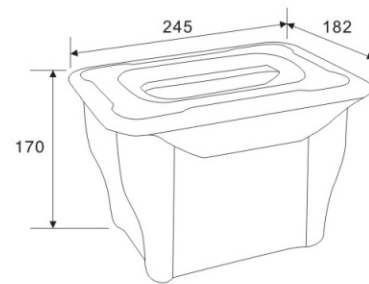
### DRAWER INSERT WASTE BIN

Item Code	Dimension (WxDxH) mm	Capacity
LDIWB31	(500-540)x(400-490)x230	31 Litre
LDIWB49	(800-840)x(400-490)x230	49 Litre



### SLIDING WASTE BIN SOFT CLOSE

Item Code	Dimension (WxDxH) mm	Capacity
LSWBSC40	342 x 490 x 430	20 Ltr. + 20Ltr.



### DUST BIN 5 Litre

Item Code	Dimension (WxDxH) mm	Capacity
LDB5	245 x 182 x 170	5 Litre



### DISH RACK PREMIUM

Item Code	Cabinet Size	Material
LDRP 600	600 mm	SS304
LDRP 700	700 mm	SS304
LDRP 800	800 mm	SS304
LDRP 900	900 mm	SS304
LDRP 1000	1000 mm	SS304

### DESKTOP DISH RACK

Item Code	Cabinet Size	Material
LDDR 600	600 mm	SS201



### DISH RACK

Item Code	Cabinet Size	Material
LDR 600	600 mm	SS201
LDR 700	700 mm	SS201
LDR 800	800 mm	SS201
LDR 900	900 mm	SS201
LDR 1000	1000 mm	SS201



**Multi Functional  
Knife Rack**

*LMKR*

333 x 115 x 200



**Two Tier Condiment  
Rack**

*LTTCR*

333 x 115 x 200



**One Tier Condiment  
Rack with Fence**

*LOTCRF*

333 x 115 x 200



**One Tier  
Condiment Rack**

*LOTCR*

333 x 115 x 200



**Square Barrel  
Rack**

*LSBR*

116 x 115 x 200



**Five Hook  
Rack**

*LFHR*

166 x 45 x 70



**Hanging Rod**

*LHR600*

*LHR900*

600x16x40

900x16x40



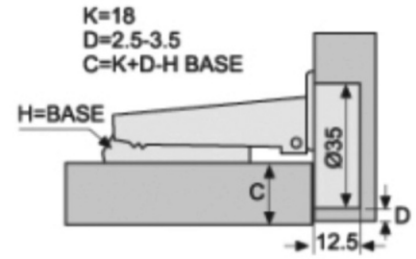
# JOINERY FITTINGS





**Auto Close Hinge**

LACH0 0° Degree

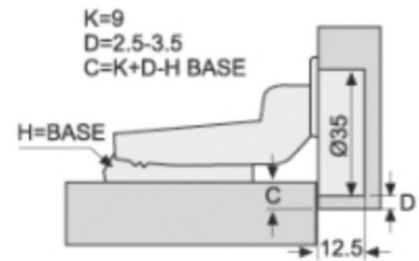


D	3	4	5	6	7
0	6	9	10	11	12
2	8	7	8	9	10

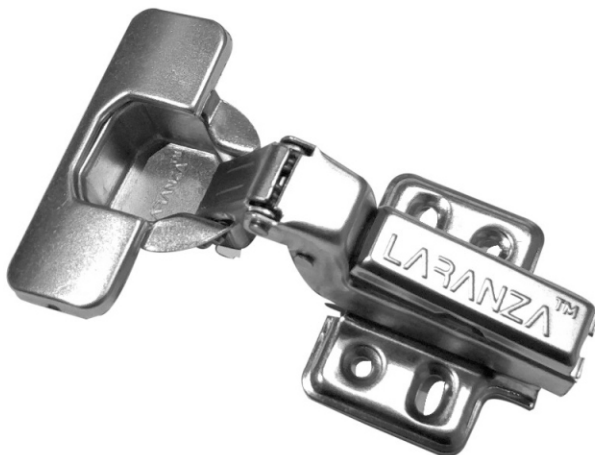


**Auto Close Hinge**

LACH8 8° Degree

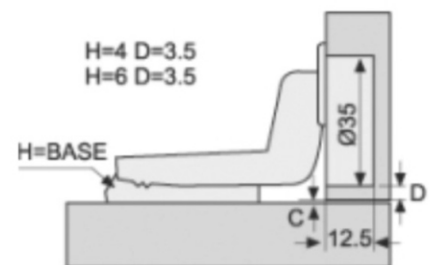


D	3	4	5	6	7
0	6	9	10	11	12
2	8	7	8	9	10



**Auto Close Hinge**

LACH15 15° Degree

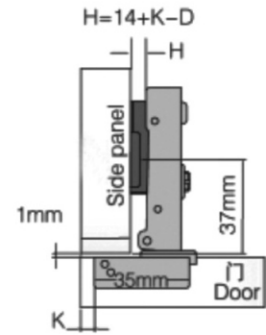


D	3	4	5	6	7
0	6	9	10	11	12
2	8	7	8	9	10



**Soft Close Hinge**

LHH0	0° Degree
LSSH0	0° Degree

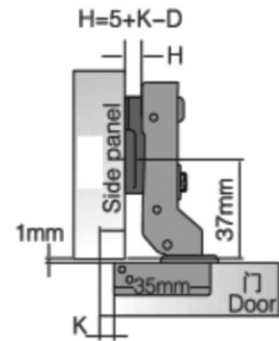


P	K	3	4	5	6	7
0		6	9	10	11	12
2		8	7	8	9	10



**Soft Close Hinge**

LHH8	8° Degree
LSSH8	8° Degree

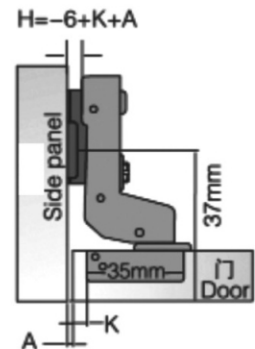


P	K	3	4	5	6	7
0		6	9	10	11	12
2		8	7	8	9	10

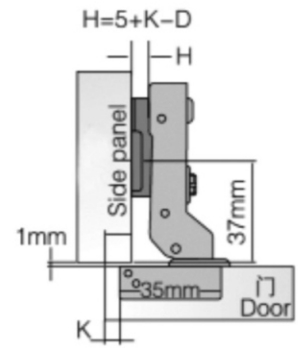


**Soft Close Hinge**

LHH15	15° Degree
-------	------------



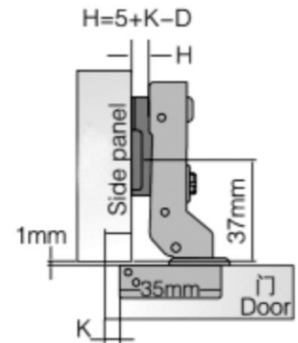
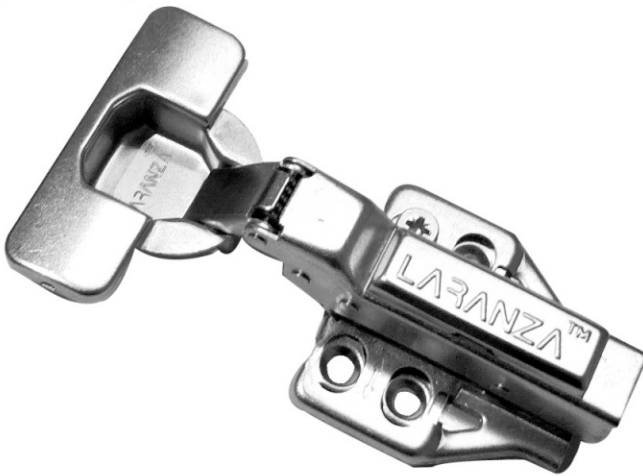
P	K	3	4	5	6	7
0		6	9	10	11	12
2		8	7	8	9	10



**3D Soft Close Hinge**

<b>P</b>	3	4	5	6	7
<b>0</b>	6	9	10	11	12
<b>2</b>	8	7	8	9	10

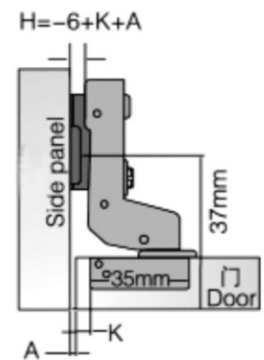
L3DH0	0° Degree
L3DHD0	0° Degree



<b>P</b>	3	4	5	6	7
<b>0</b>	6	9	10	11	12
<b>2</b>	8	7	8	9	10

**3D Soft Close Hinge**

L3DH8	8° Degree
L3DHD8	8° Degree



<b>P</b>	3	4	5	6	7
<b>0</b>	6	9	10	11	12
<b>2</b>	8	7	8	9	10

**3D Soft Close Hinge**

L3DH15	15° Degree
--------	------------



**165° Degree Hinge**

L165N      165° Degree

L165SC      165° Degree



**Blind Corner Hinge**

L90DSC      90° Soft Close



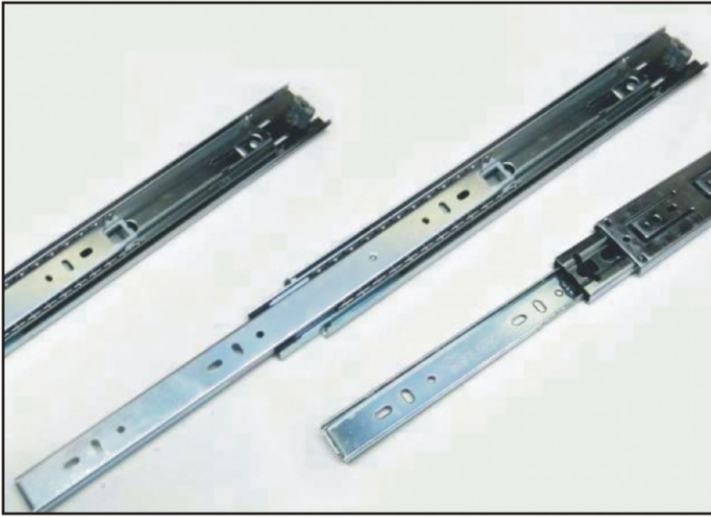
**135° Corner Hinge**

LPCH      Pie Cut



**45° Corner Hinge**

L45DSC      45° Soft Close



**Drawer Telescopic Slides (Double Zinc)**

Item Code	Size	Weight Capacity
LTS 8-20	8-20 Inches	35 KG
LTS 10-24	10-24 Inches	45 KG
LTS 28-36	28,30 & 36 Inches	45 KG

**Drawer Telescopic Slides (Black)**

Item Code	Size	Weight Capacity
LTSB 8-20	8-20 Inches	35 KG



**Drawer Telescopic Slides (SS)**

Item Code	Size	Weight Capacity
LTSS 10-20	10-20 Inches	35 KG



### Drawer Telescopic Slides (Soft Close)

Item Code	Size	Weight Capacity
LTSC 12-22	12-22 Inches	40 KG

### Heavy Duty Telescopic Slides

Item Code	Size	Weight Capacity
LTHS 18	18 Inches	125 KG
LTHS 20	20 Inches	125 KG
LTHS 28-36	28-36 Inches	125 KG
LTHS 42	42 Inches	125 KG



### Telescopic Slides Push Open

Item Code	Size	Weight Capacity
LTSP018	18 Inches	40 KG
LTSP020	20 Inches	40 KG

### Telescopic Slides Push Open with Soft Close

Item Code	Size	Weight Capacity
LTSPOSC18	18 Inches	40 KG
LTSPOSC20	20 Inches	40 KG



### Sheet Basket Quadro

Item Code	Size	Weight Capacity
LSBQ500	500 mm	35 KG

### Wire Quadro

Item Code	Size	Weight Capacity
LWQ500	500 mm	35 KG



### Soft Close Quadro

Item Code	Size	Weight Capacity
LQ250	250 mm	35 KG
LQ300	300 mm	35 KG
LQ350	350 mm	35 KG
LQ400	400 mm	35 KG
LQ450	450 mm	35 KG
LQ500	500 mm	35 KG





LA ANZA

LA ANZA

LA ANZA

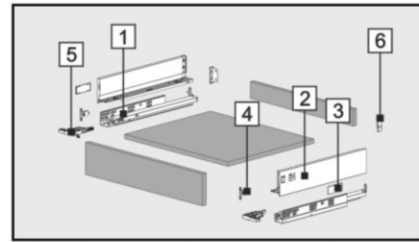
LA ANZA

LA ANZA

LA ANZA

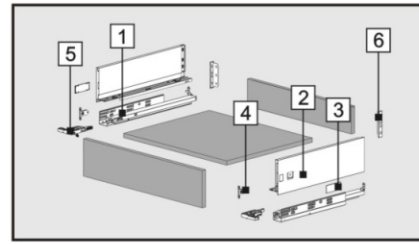
LA ANZA

LA ANZA



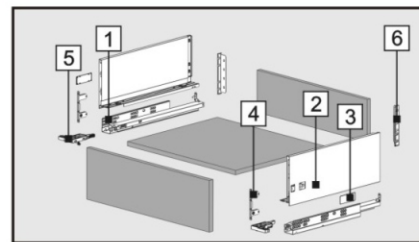
### SLIM BOX (500 mm)

Item Code	Height	Color
LSLIMBOX-M500	84 mm	Anthracite Grey



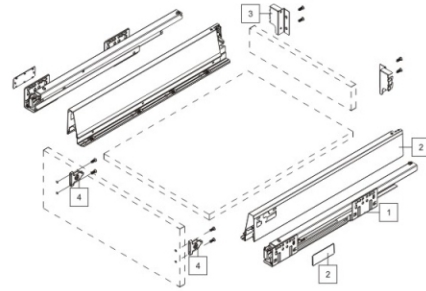
### SLIM BOX (500 mm)

Item Code	Height	Color
LSLIMBOX-B400	125 mm	Anthracite Grey
LSLIMBOX-B450	125 mm	Anthracite Grey
LSLIMBOX-B500	125 mm	Anthracite Grey



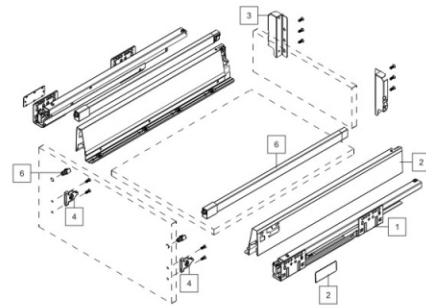
### SLIM BOX (500 mm)

Item Code	Height	Color
LSLIMBOX-D400	168 mm	Anthracite Grey
LSLIMBOX-D450	168 mm	Anthracite Grey
LSLIMBOX-D500	168 mm	Anthracite Grey



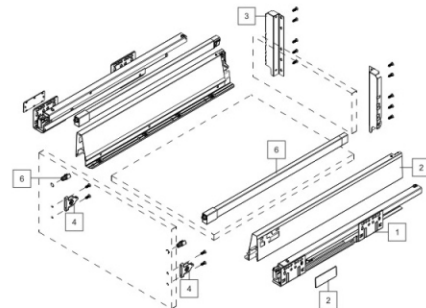
### DRAWER M HEIGHT

Item Code	Depth	Color
LBOX-MS500	500	Flash Silver



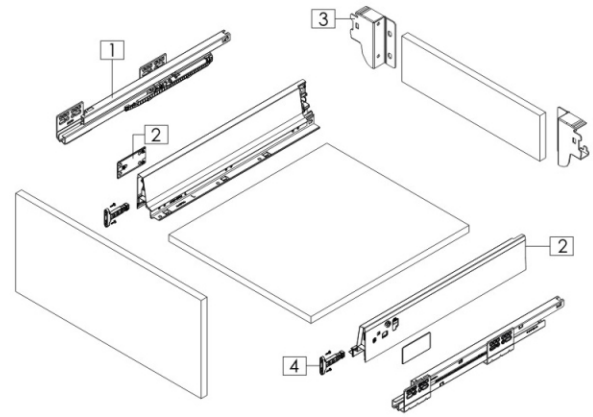
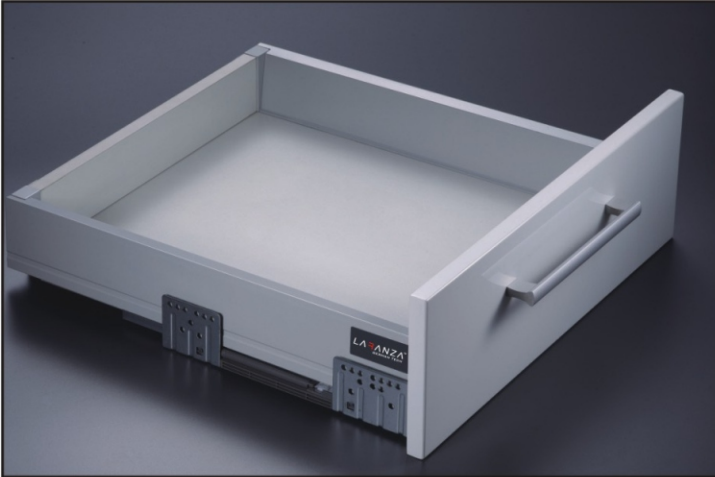
### DRAWER B HEIGHT

Item Code	Depth	Color
LBOX-BS500	500	Flash Silver



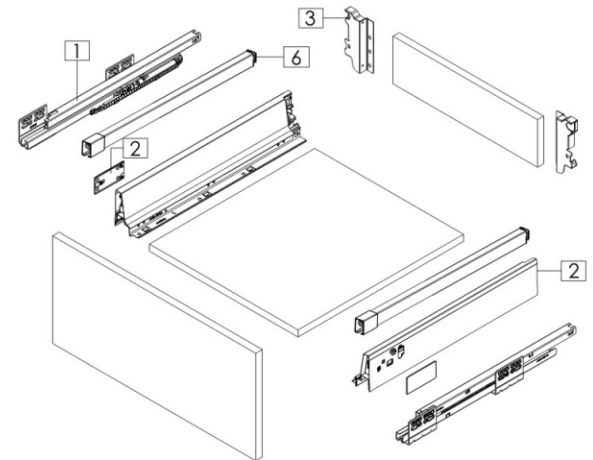
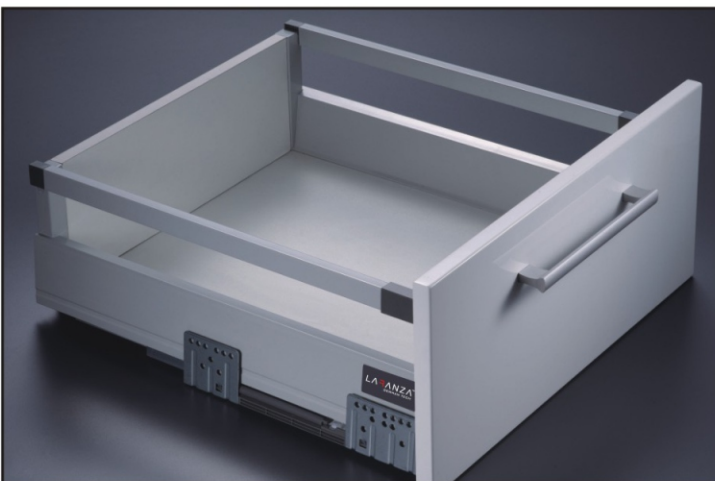
### DRAWER D HEIGHT

Item Code	Depth	Color
LBOX-DS500	500	Flash Silver
LBOX-DS500	500 (65Kg.)	Flash Silver



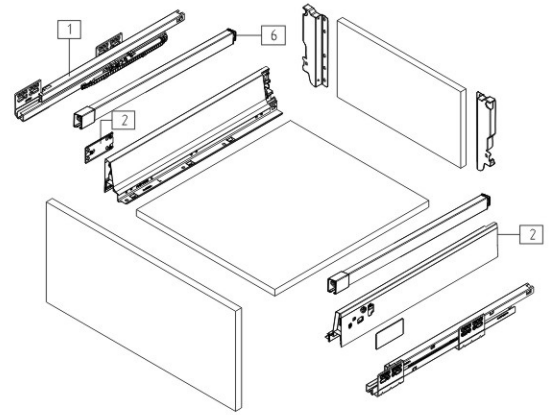
### Drawer M Height

Item Code	Depth	Color
LBOX-MW300	300 mm	White
LBOX-MW350	350 mm	White
LBOX-MW400	400 mm	White
LBOX-MW450	450 mm	White
LBOX-MW500	500 mm	White
LBOX-MW550	550 mm	White



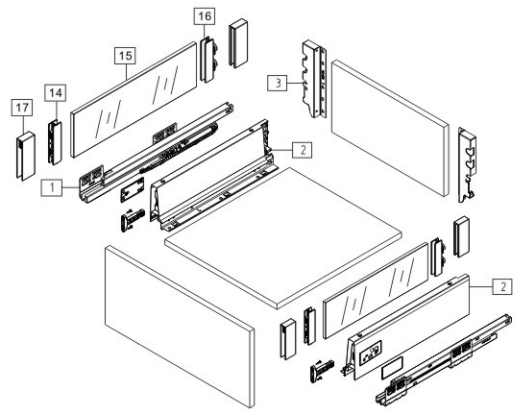
### Drawer B Height

Item Code	Depth	Color
LBOX-BWSG300	300 mm	White
LBOX-BWSG350	350 mm	White
LBOX-BWSG400	400 mm	White
LBOX-BWSG450	450 mm	White
LBOX-BWSG500	500 mm	White
LBOX-BWSG550	550 mm	White



### Drawer D Height

Item Code	Depth	Color
LBOX-DWSG300	300 mm	White
LBOX-DWSG350	350 mm	White
LBOX-DWSG400	400 mm	White
LBOX-DWSG450	450 mm	White
LBOX-DWSG500	500 mm	White
LBOX-DWSG550	550 mm	White

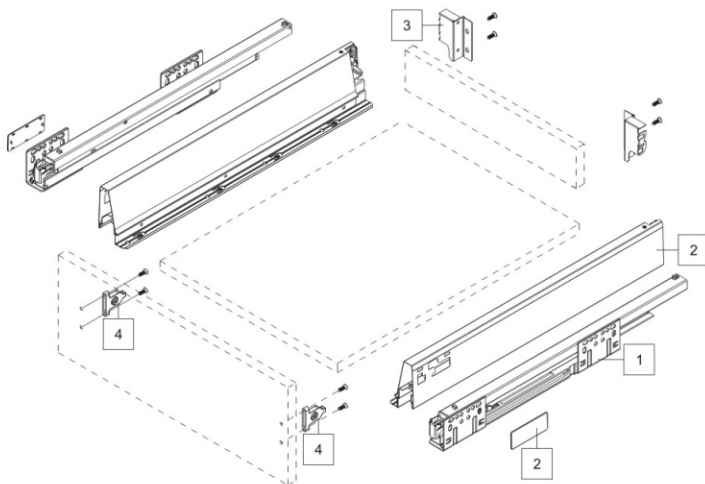


### Drawer Glass D Height

Item Code	Depth	Color
LBOX-DWG500	500 mm	White



**PUSH OPEN WITH SOFTCLOSE**



**DRAWER M HEIGHT**

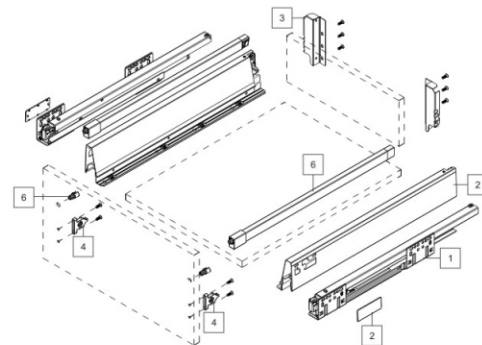
Item Code	Depth	Color
LBOXPS-MS500	500	Flash Silver

**DRAWER B HEIGHT**

Item Code	Depth	Color
LBOXPS-BS500	500	Flash Silver

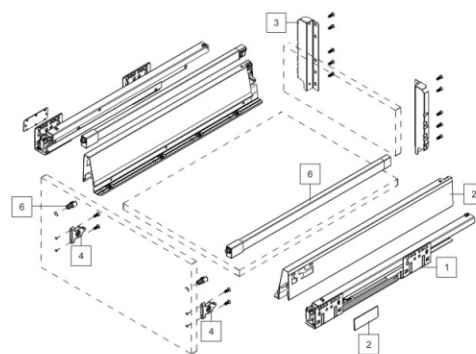
**DRAWER D HEIGHT**

Item Code	Depth	Color
LBOXPS-DS500	500	Flash Silver



### PREMIUM DRAWER BOX

Item Code	Depth	Color
LBOX-PWM500	500	Pearl White
LBOX-PWB500	500	Pearl White
LBOX-PWD500	500	Pearl White

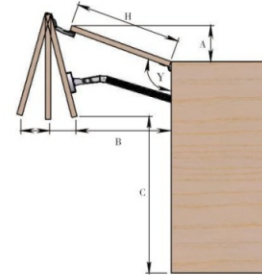


### PREMIUM DRAWER BOX

Item Code	Depth	Color
LBOX-SBM500	500	Shiny Black
LBOX-SBB500	500	Shiny Black
LBOX-SBD500	500	Shiny Black

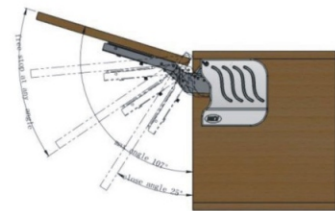
### Liftup Bi-Fold

LBFL200	Weight Capacity	4 to 8 Kg.
LBFL300	Weight Capacity	4 to 8 Kg.



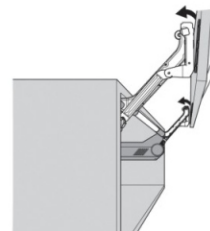
### Liftup 90Deg

L90L	Weight Capacity	2 to 5 Kg.
L90LH	Weight Capacity	5 to 12 Kg.



### Parallel Lift Up Premium

LPLUPL	Weight Capacity	3-6 Kgs.
LPLUPH	Weight Capacity	5-9 Kgs.

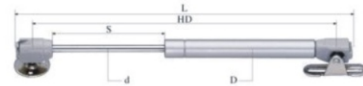






### Gas Shocker

LGS60N	LGS100N	LGS150N
LGS200N	LGS250N	LGS100N-SC



### Kamani Stay

LKMS	Weight Capacity	6KGs
------	-----------------	------



### Heavy Hydraulic Stay

LHHS	Weight Capacity	12KGs
------	-----------------	-------





### Flap Stay

LFLS	Weight Capacity	6KGs
------	-----------------	------



### Parallel Lift Up

LPLU	Weight Capacity	4-7 KGs
------	-----------------	---------



300-450 mm Cabinet Height

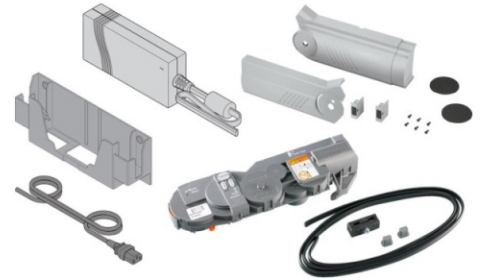


### Inclined Lift Up

LILU	Weight Capacity	4-7 KGs
------	-----------------	---------

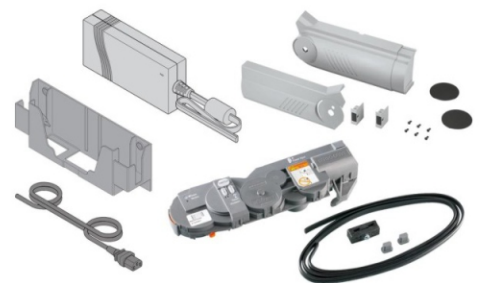


600-700 mm Cabinet Height



### Electronic Liftup Bi-Fold

LEBFL	Weight Capacity	5 to 7 Kg.
LEBFLH	Weight Capacity	7 to 9 Kg.



### Electronic Parallel Lift Up

LEPLU	Weight Capacity	4-6 Kgs.
LEPLUH	Weight Capacity	6-9 Kgs.



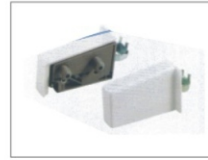
### BED FITTING

Item Code	Dimensions	Capacity
LBF1000	1 Meter	100 KGs
LBF1500	1.5 Meter	150 KGs



**PVC LEG**

100 mm



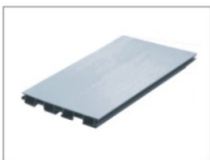
**CABINET SUSPENSION BRACKET**



**PLINTH CLIP**



**BUFFER**



**ALUMINIUM SKIRTING**

100 mm

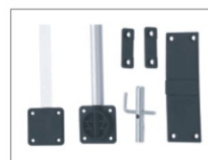


**PUSH OPEN CATCHER**



**90 D PLINTH CONNECTOR**

100 mm

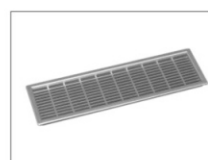


**DOOR STRAIGHTENER**



**180 D PLINTH CONNECTOR**

100 mm



**VENTILATING FRAME**



**DOWEL (WOODEN)**

8 X 40 mm



**SPICE GLASS BOTTLE**



**MINIFIX (3 PART)**



**SHELF SUPPORT**



**CONNECTING SCREW**

22mm, 27mm, 32mm, 38mm



**MICROWAVE STAND**



**PROFILE CONNECTORS**



**EDGE BENDING**

Matt, HG, Wood Grain

# WARDROBE & LIGHTS





**Soft Close Rattan Basket**

Item Code	Dimensions (W x D x H) mm	Cabinet Size
LWRB 900	864 x 460 x 185	900



**Soft Close Decorative Shelf**

Item Code	Dimensions (W x D x H) mm	Cabinet Size
LWDS 900	864 x 460 x 71	900



**Soft Close Trousers Rack**

Item Code	Dimensions (W x D x H) mm	Cabinet Size
LWTR 900	864 x 460 x 71	900



**Soft Close Shoe Rack**

Item Code	Dimensions (W x D x H) mm	Cabinet Size
LWSR 900	864 x 460 x 170	900



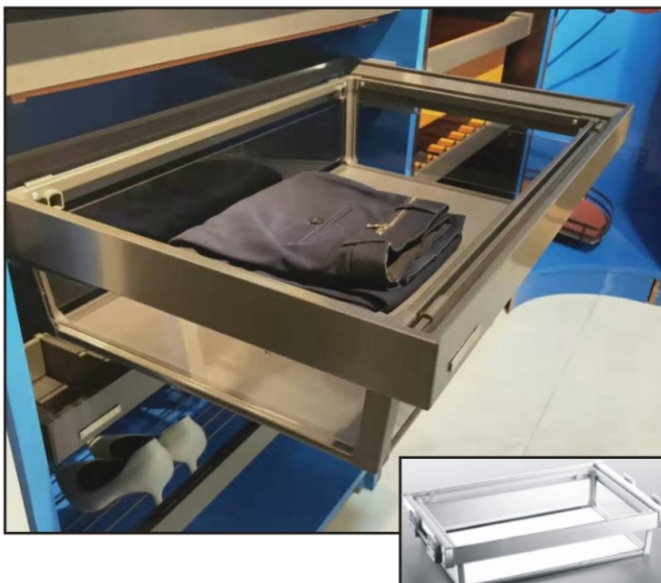
### Soft Close Metal Basket

Item Code	Dimensions (W x D x H) mm	Cabinet Size
LWMB900	864 x 460 x 175	900



### Clothes Hanging Rack

Item Code	Dimensions (W x D x H) mm	Cabinet Size
LWCHR	115 x 455 x 115	> 500 mm



### Soft Close Glass Basket

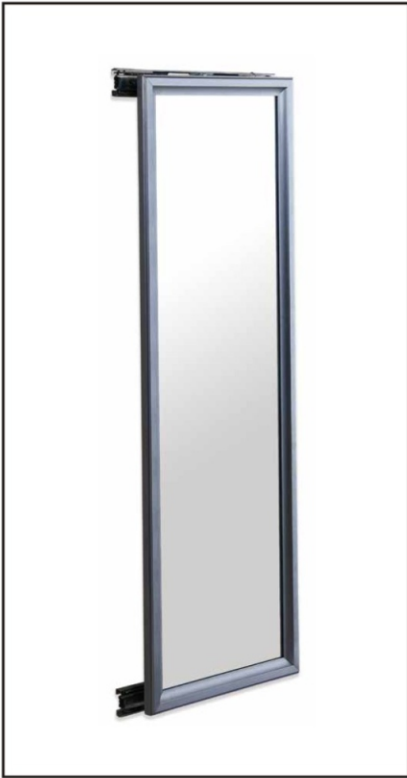
Item Code	Dimensions (W x D x H) mm	Cabinet Size
LWGB900	864 x 460 x 175	900



### Tie Rack

Item Code	Dimensions (W x D x H) mm	Cabinet Size
LWTBR	83 x 450 x 102	> 150 mm





**Revolve Mirror**

Item No.	Dimension
LWRM	1000 x 350 mm
LWRMB	1200 x 350 mm



**Wardrobe Uplifter**

Item No.	Dimension
LWUL	(830-1150)x820



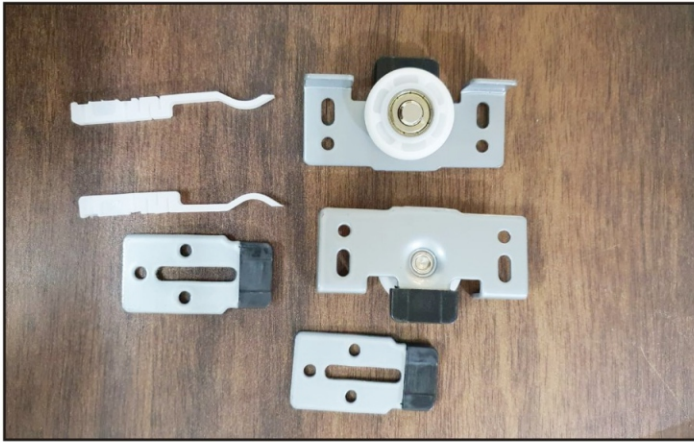
**Revolve Shoe Rack**

Item No.
LWRSR8 (8 Layer)
Dimension
> 800 mm x 1350 -1550
Item No.
LWRSR12 (12 Layer)
Dimension
> 800 mm x 1910 -2110

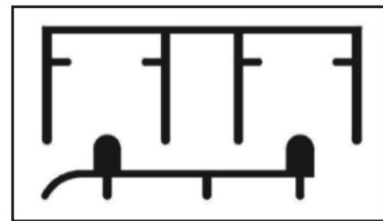
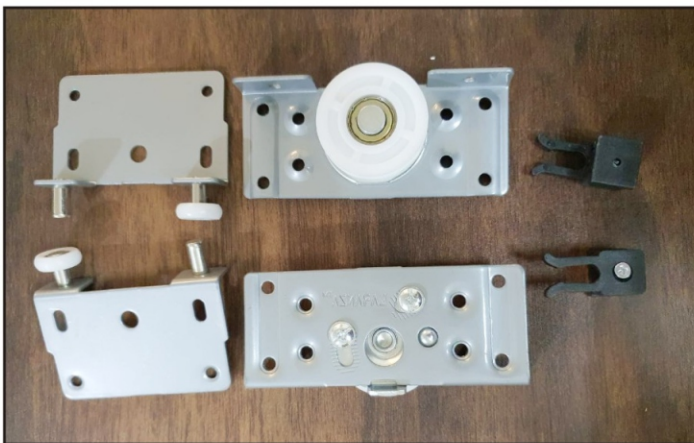


**Revolve Iron Board**

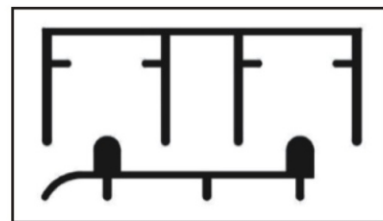
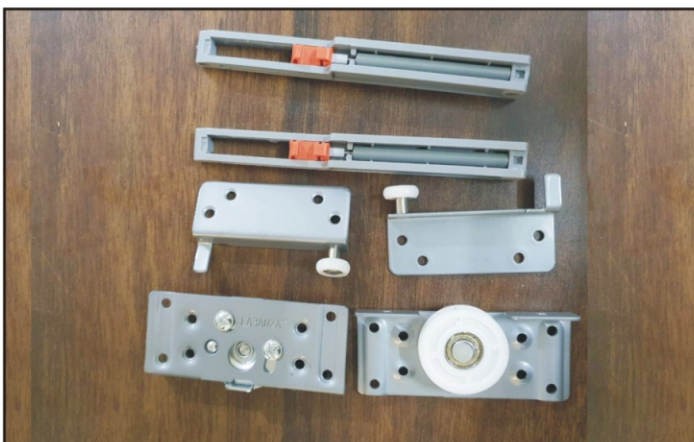
Item No.	Dimension
LWRIB	295 x 430 x140



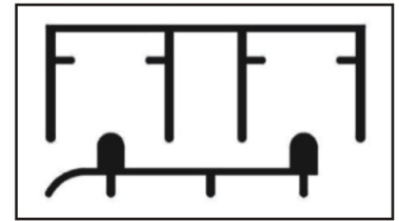
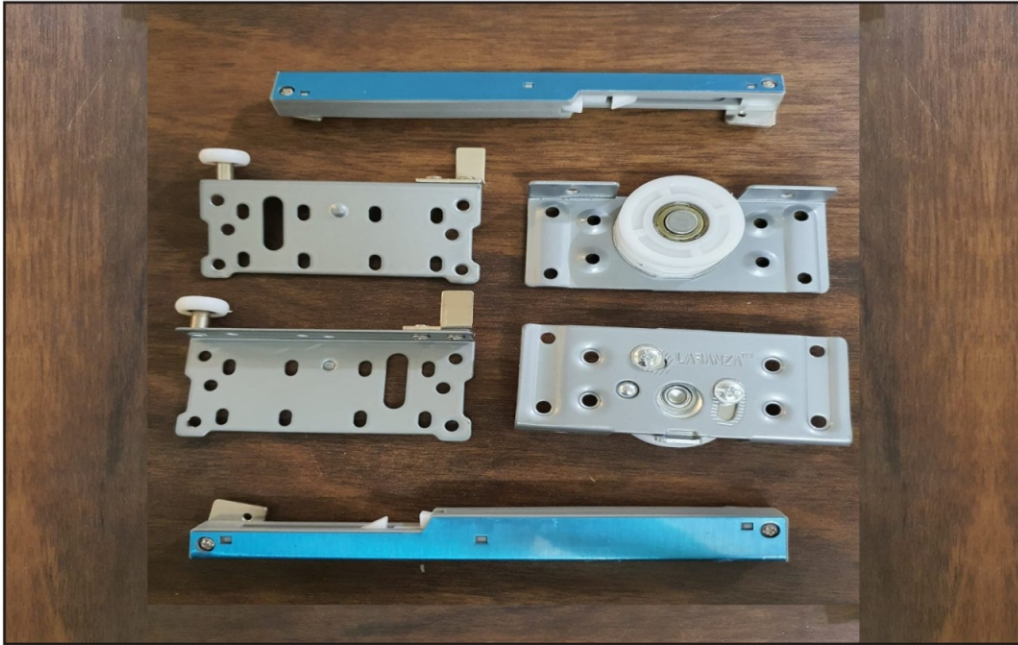
**Sliding Fitting 56**



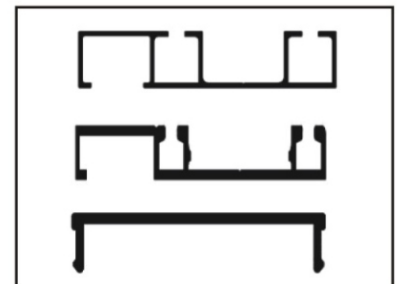
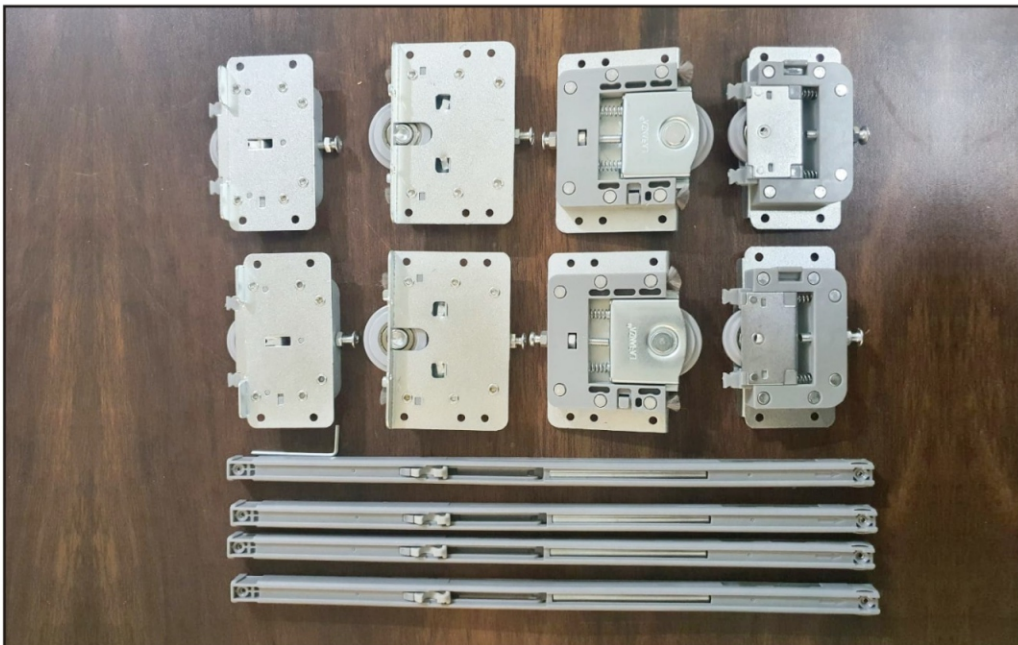
**Double Track Runner**



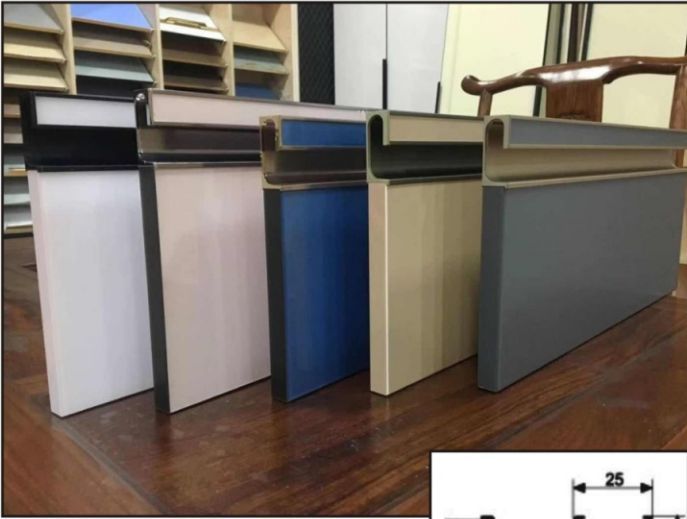
**Double Track Runner Self Close**



Double Track Runner Self Close (SS)



Double Track Runner Self Close (Premium)



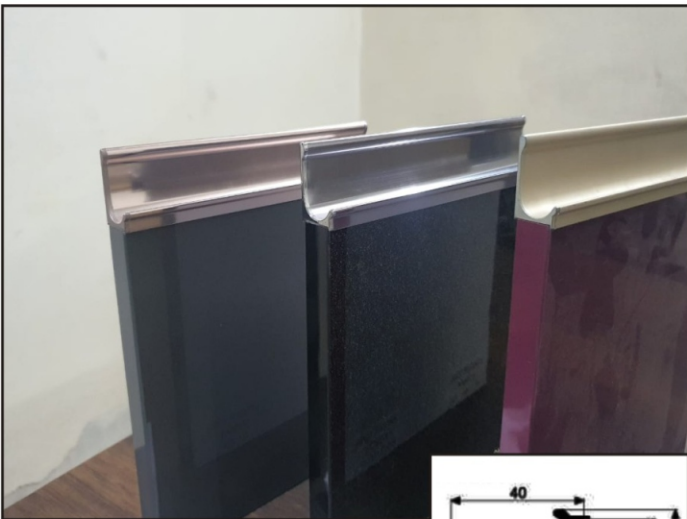
**G Handle Big Mica Insert**

Apple Gold, Rose Gold  
Sapphire Grey



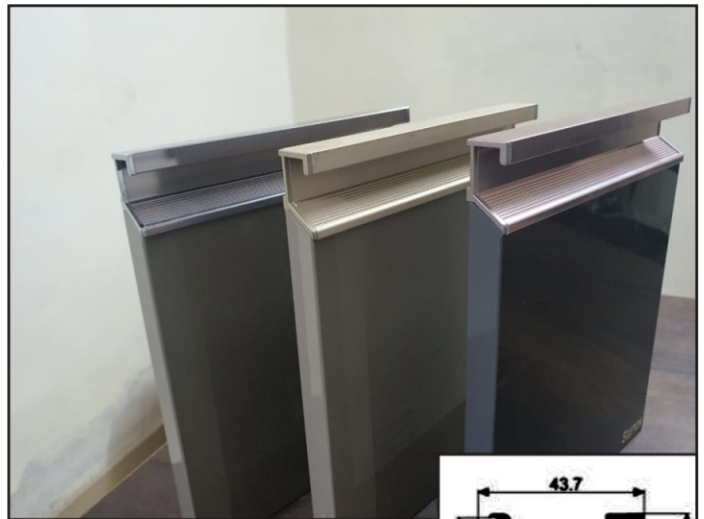
**J Handle Mica Insert**

Apple Gold, Rose Gold  
Sapphire Grey



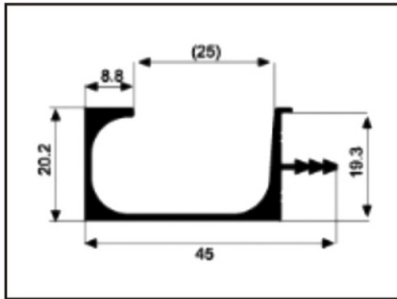
**J Handle Premium**

Apple Gold, Rose Gold  
Sapphire Grey



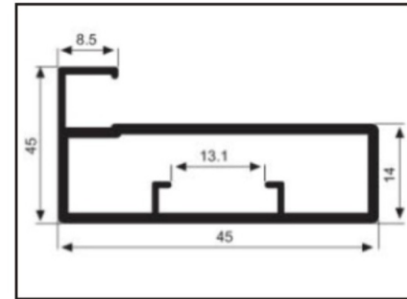
**G Handle Tapered Insert**

Apple Gold, Rose Gold  
Sapphire Grey



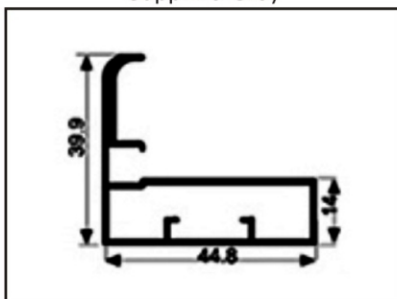
**G-Sec**

Anodized, CP Brush, SS Brush,  
Glossy, Matt Black, Rose Gold  
Sapphire Grey



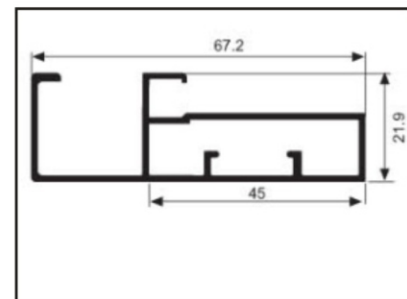
**Glass Frame Profile Finish**

Anodized, CP Brush, SS Brush,  
Glossy, Matt Black, Rose Gold



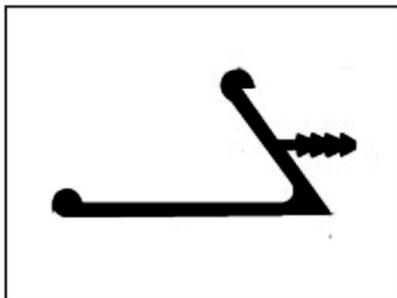
**Glass Handle Curved**

Glossy, Rose Gold



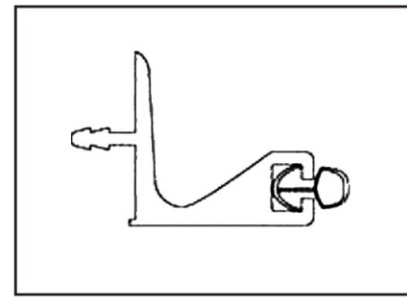
**Glass Handle Profile Finish**

Anodized, CP Brush, SS Brush,  
Glossy, Matt Black, Rose Gold



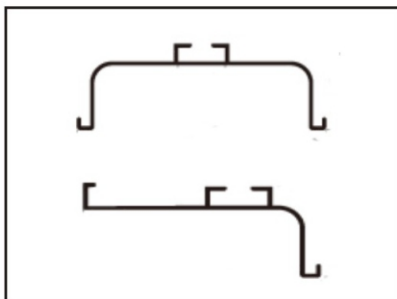
**J Handle Tapered**

SS Brush, Glossy  
Anodized



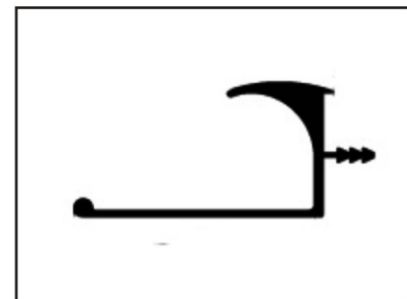
**Top Gola**

SS Brush, Glossy  
Anodized



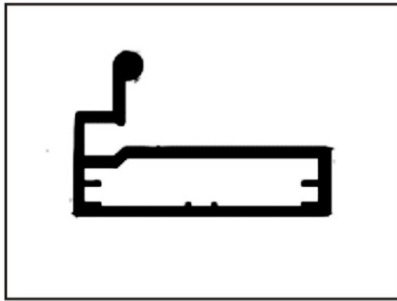
**Gola Profile**

Anodized, SS Brush, Glossy  
Matt Black, Rose Gold

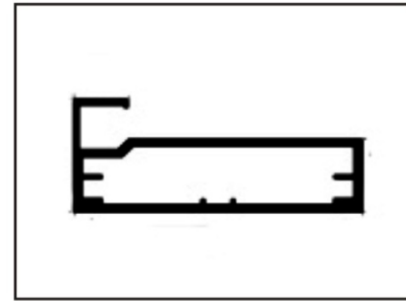


**J Handle Profile**

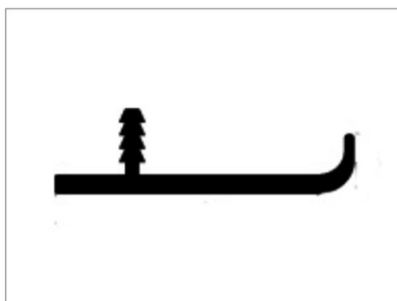
Anodized, SS Brush, Glossy  
Matt Black, Rose Gold



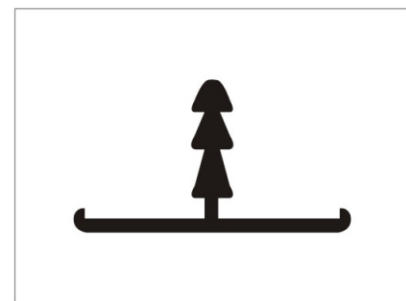
**Glass Handle 50 mm**  
SS Brush, Anodized



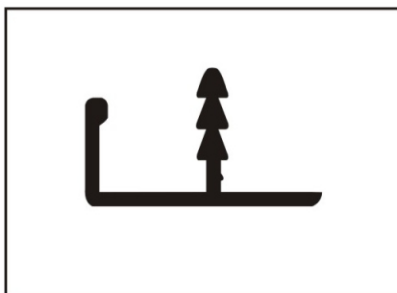
**Glass Frame 50 mm**  
SS Brush, Anodized



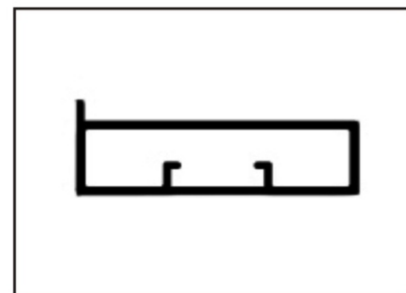
**F Handle Profile**  
SS Brush, Glossy  
Anodized



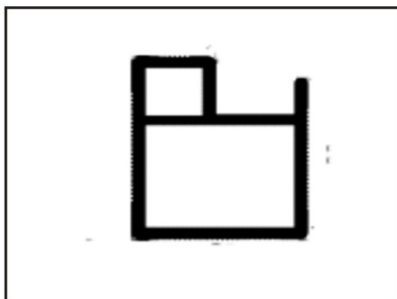
**T Edge Profile 22 mm, 25 mm**  
CP Brush, Glossy  
Anodized



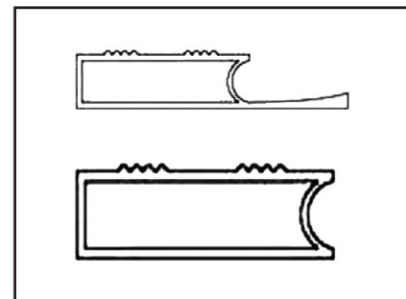
**F Edge Profile 22 mm, 25 mm**  
CP Brush, Glossy  
Anodized



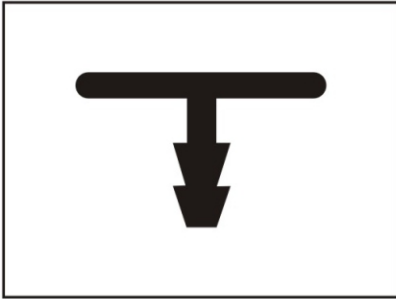
**Glass Pasting Frame 50 mm**  
Finish CP



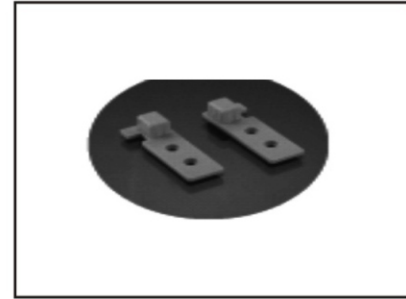
**Sink Profile**  
Anodized



**Glass Pasting Frame**  
CP and Anodized



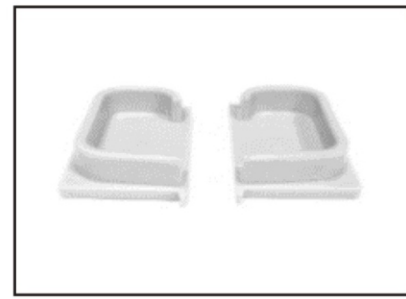
**T Patti 6 mm, 8 mm, 12 mm**  
Glossy, Rose Gold



**Sink Profile Connector**



**C and J gola Connector**



**G end Cap**  
Finish CP



**Pull Grip Handle**

Item Code : 1007  
Finish Chrome, SS Matt



**Pull Grip Handle**

Item Code : 1008  
Finish CP



**Pull Grip Handle**

Item Code : 1009  
Finish CP



**Pull Grip Handle**

Item Code : 1010  
Finish Chrome, Rose Gold  
Sapphire Grey

# Notes

A series of horizontal dotted lines for writing notes.



LA **R**ANZA™  
GERMAN TECH



**Kitchen Art**  
[www.kitchenart.org.in](http://www.kitchenart.org.in)

Mob.: 9334443339, 9135443339